



Columbus



Co-funded by the
Erasmus+ Programme
of the European Union

External Evaluation Proposal

Building the future of Latin America: engaging women into STEM (W-STEM)

Kelly Henao
Salamanca, Spain
March 2019

Columbus Association: Since 1987 Universities helping universities

- First network of European and Latin American universities. (48 HEIs in 15 countries)
 - A much larger list of partners such as the UCLG (United Cities and Local Governments), **UNESCO (where it is located), Lindau Nobel Laureate Meetings, Sulitest.org**
 - **Our mission:** to enhance institutional development and foster international cooperation
- University Governance and modernization
 - Academic Reform Strategies
 - Open Science Policies and Strategies
 - Teaching and Learning innovation
 - Regional Development / Collaboration between Universities and Cities
 - Internationalization of Higher Education
 - Internationalization of Research
 - Graduates follow-up systems
 - Evaluation and Quality Systems

Columbus has supported more than 20 international projects funded by the European Commission

In the last years, three Erasmus+ Capacity Building projects are being evaluated and our approaches are highly appreciated by project officers of the programme.



Citylab Project: Engaging students with Sustainable Cities in Latin-America



Students4Change: Social Entrepreneurship in Academia



Citylab Car Project: Engaging Students in Sustainable Caribbean Cities

Evaluation within the W-STEM project

- The W-STEM project proposed a blended system for the project's quality monitoring and evaluation
- Blended system: **internal quality procedures + external evaluation**
- The subcontracting of an external evaluator as part of the quality assurance system allow a **supportive objective analysis for the achievement of the outcomes and project's expected impact**

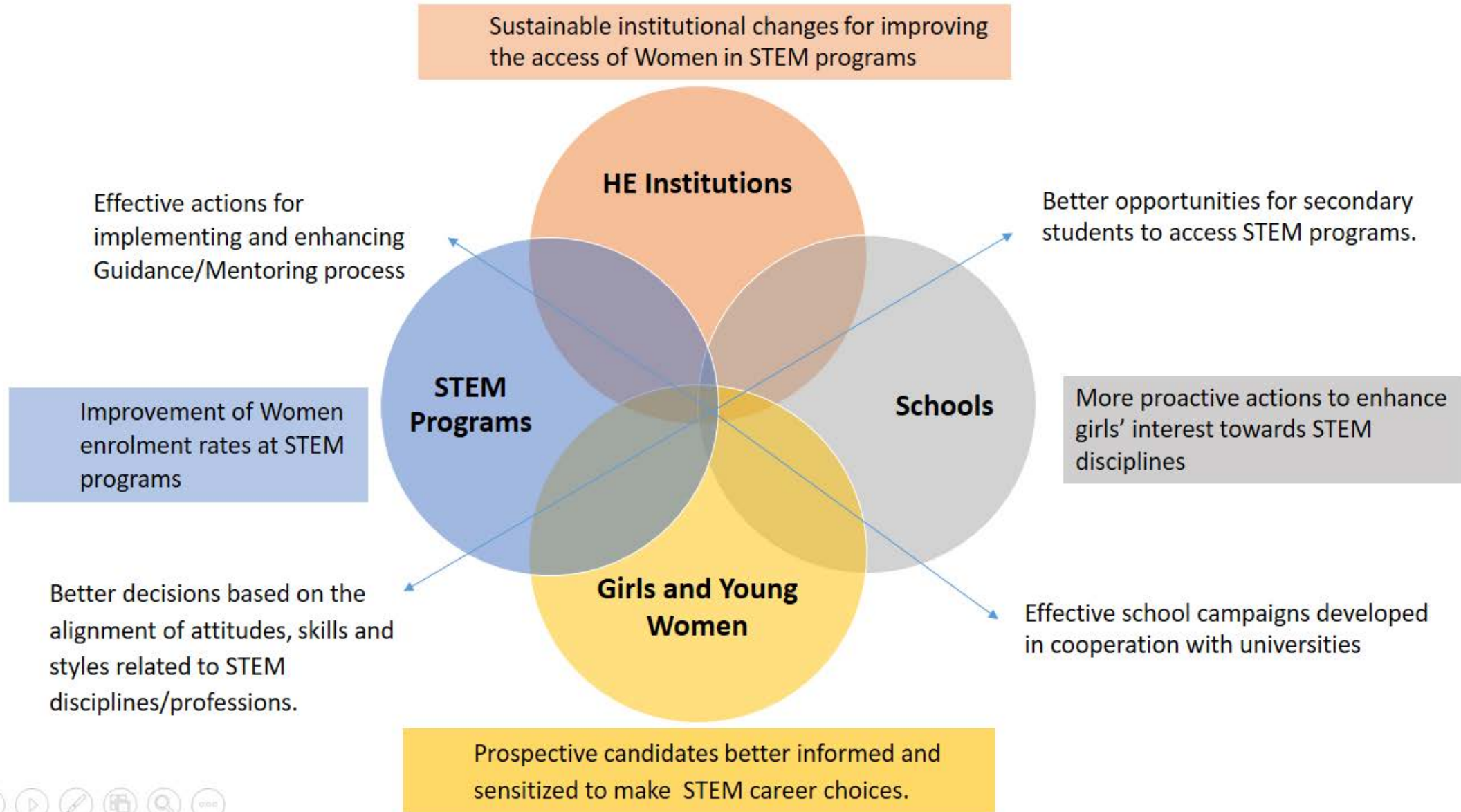
Our Approach: external evaluation is a continuous process that should allow to take timely corrections

- Usually, under a reactive approach, the role of external players limits the evaluation to a **desk-analysis of outputs/outcomes**, leading to **observations that not always reflect the real consortium's possibilities to take timely corrections**
- Columbus Association proposes
 - To develop an **insightful evaluation** of the project's progress, sustainability and impact
 - Which, takes into account the **context of each involved partner**.
 - To follow an **empathic and objective** approach,
 - Deliver timely and relevant recommendations,
 - Stimulate short and long term actions and reflections
- **Synthetic**, avoiding excessive presentations or information that overload the partner's tasks
- **Compact**, to give a quick overview and to facilitate communication with the partners, facilitating the decision-making process
- **Action-oriented**, not just a report with general information on the project activities, but includes risk analysis and timely recommendations

You have committed to achieve indicators of progress, activities, short term, and long term impact . All together they reach almost 50 indicators!

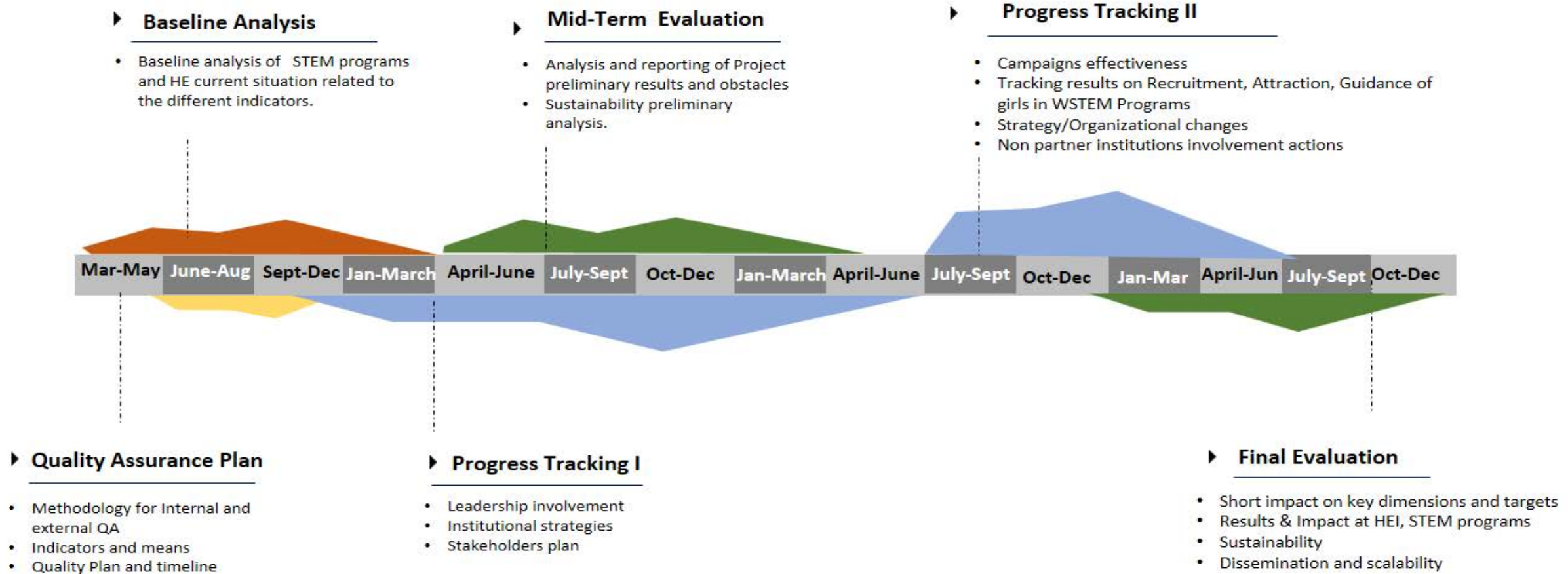
- External evaluation focus: **W-STEM project's effects at its main targets** allowing to relate impact indicators to the main objectives for these targets
 - **Higher Education Institutions**
 - **STEM programs**
 - **Secondary Schools**
 - **Girls and Young Women**
- For this we should agree on a limited number of indicators
- Focusing on a **small number of indicators make them simple and easy to interpret** for all partners, reliable, measurable and that allow for comparisons

PROGRESS AND IMPACT INDICATORS ACCORDING TO KEY TARGETS



External Evaluation Milestones

WSTEM Project



Data collection sources: On-line questionnaires and surveys; Interviews; Focus groups; Observation analysis at different meetings of the project

Main outputs/deliverables and requested inputs

- W-STEM project's **Quality Assurance Plan**
- **Baseline Analysis** at each partner institution in comparison with the expected results/impact
- **Analysis of data collected** through surveys, focus groups and interviews
- **Recommendations and risk analysis notes/communication**
- **Socialization of evaluation results** to the consortium
- **Mid-term Report**
- **Final Report**

- **Working sessions** to prepare the plan with WP Quality's leader.
- **Partners reports** and raw data collected in WP activities
- **Working sessions** with the Work-Package's leader on assessment
- **Access to reports** on the results of the campaigns with secondary school's progress by partners;
- **Take active part in focus groups and interviews**
- To complete **surveys, questionnaires** when requested



Columbus



Co-funded by the
Erasmus+ Programme
of the European Union

Thank you

Kelly Henao

k.henao@columbus-web.org