



HCI INTERNATIONAL 2018

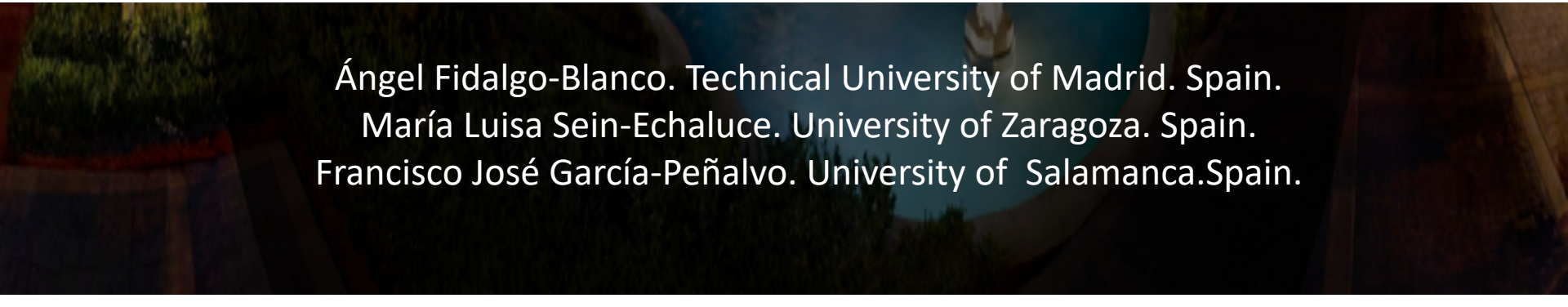
20TH INTERNATIONAL CONFERENCE

ON HUMAN-COMPUTER INTERACTION

CAESARS PALACE, LAS VEGAS, NEVADA

15-20 JULY 2018

MICRO FLIP TEACHING WITH COLLECTIVE INTELLIGENCE



Ángel Fidalgo-Blanco. Technical University of Madrid. Spain.

María Luisa Sein-Echaluce. University of Zaragoza. Spain.

Francisco José García-Peñalvo. University of Salamanca. Spain.

MODEL

Active Cooperative Collective Intelligence (ACCI)

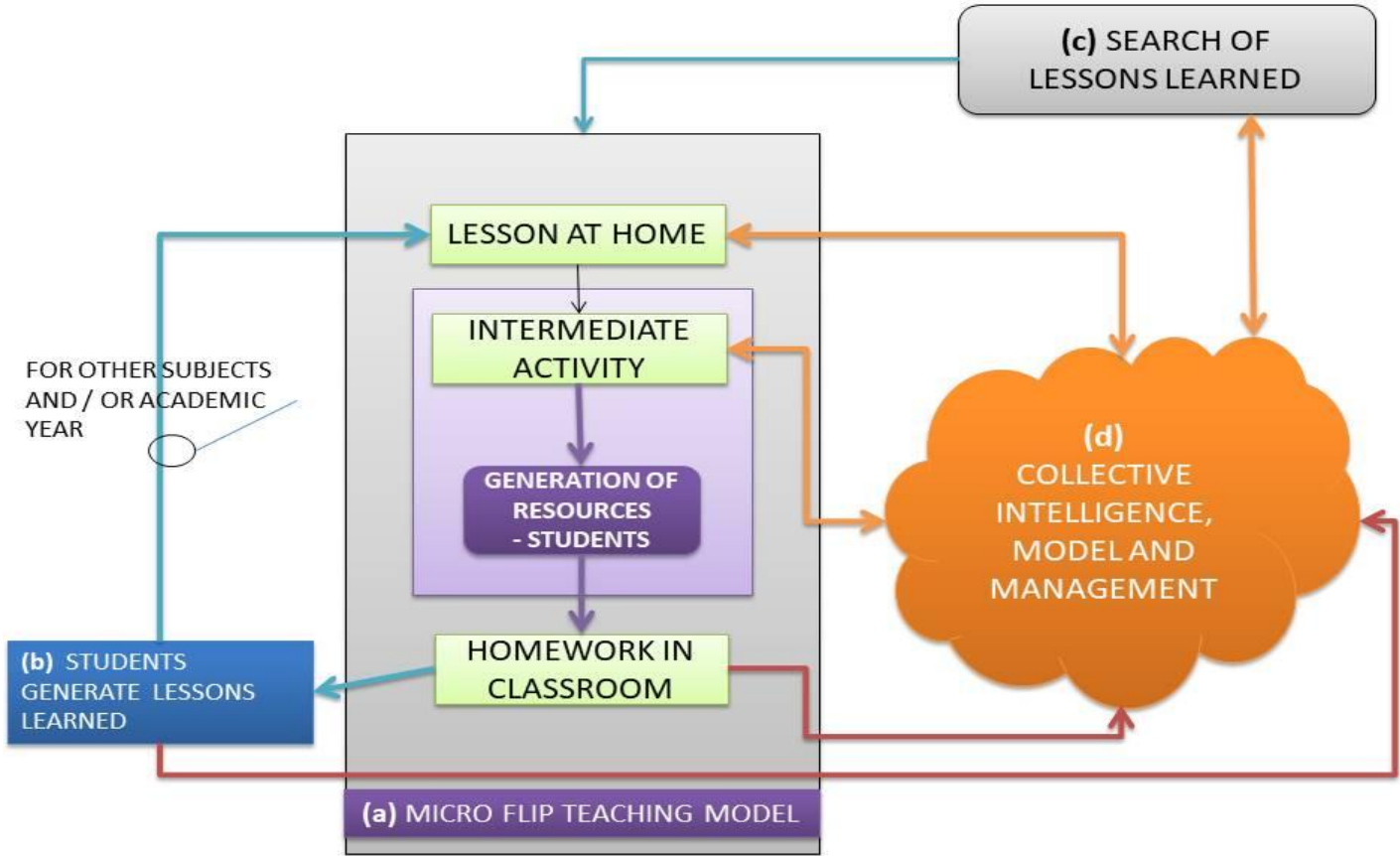
The proposed model integrates collective intelligence, communities of learning (using social networks), the active method Micro Flip Teaching (MFT), knowledge management systems and the creation of knowledge by students.

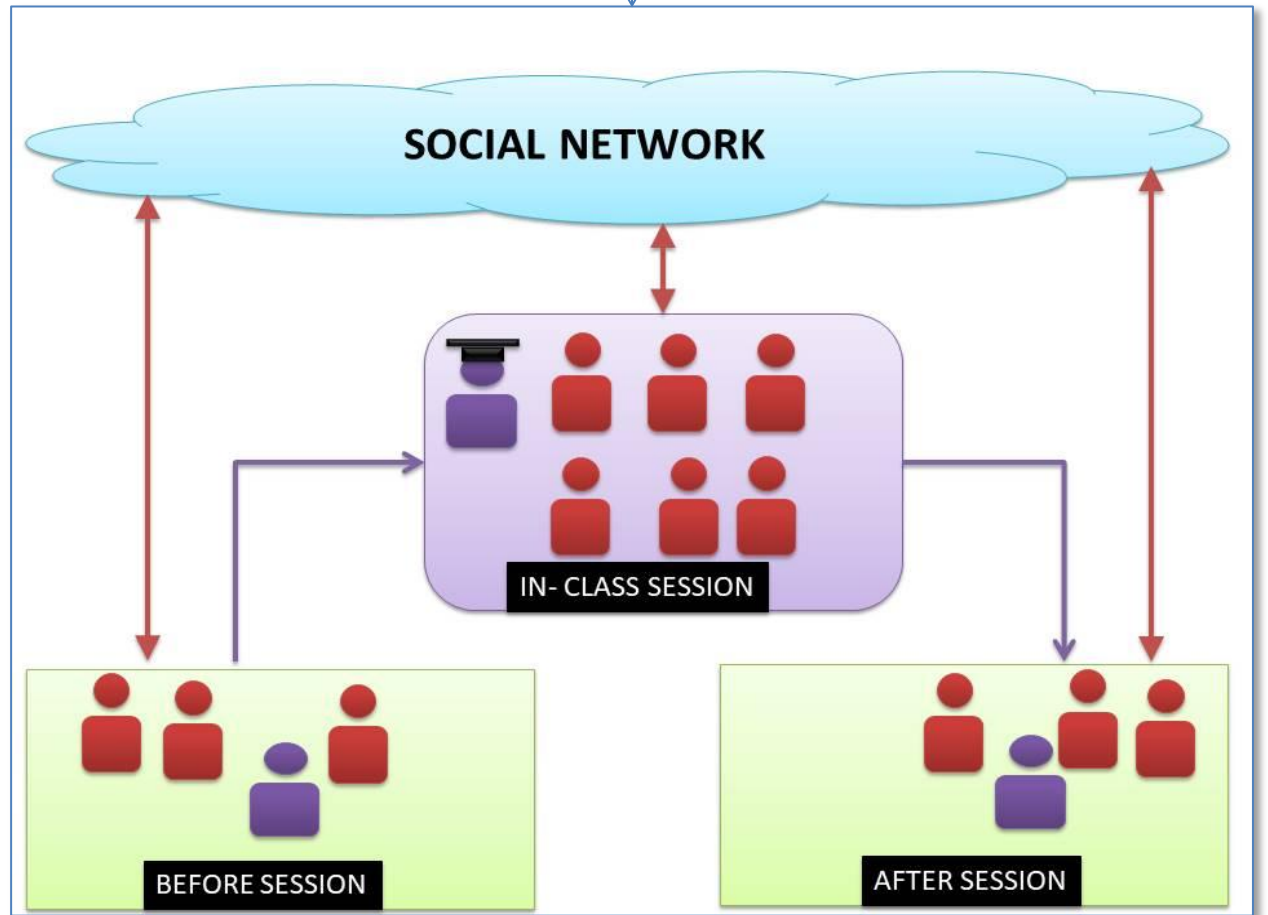
The following aspects are measured:

1. Capacity of students to contribute contents during the learning process
2. Type of knowledge provided by students
3. Use of knowledge
4. Organization and search for knowledge
5. Usefulness of knowledge

MODEL

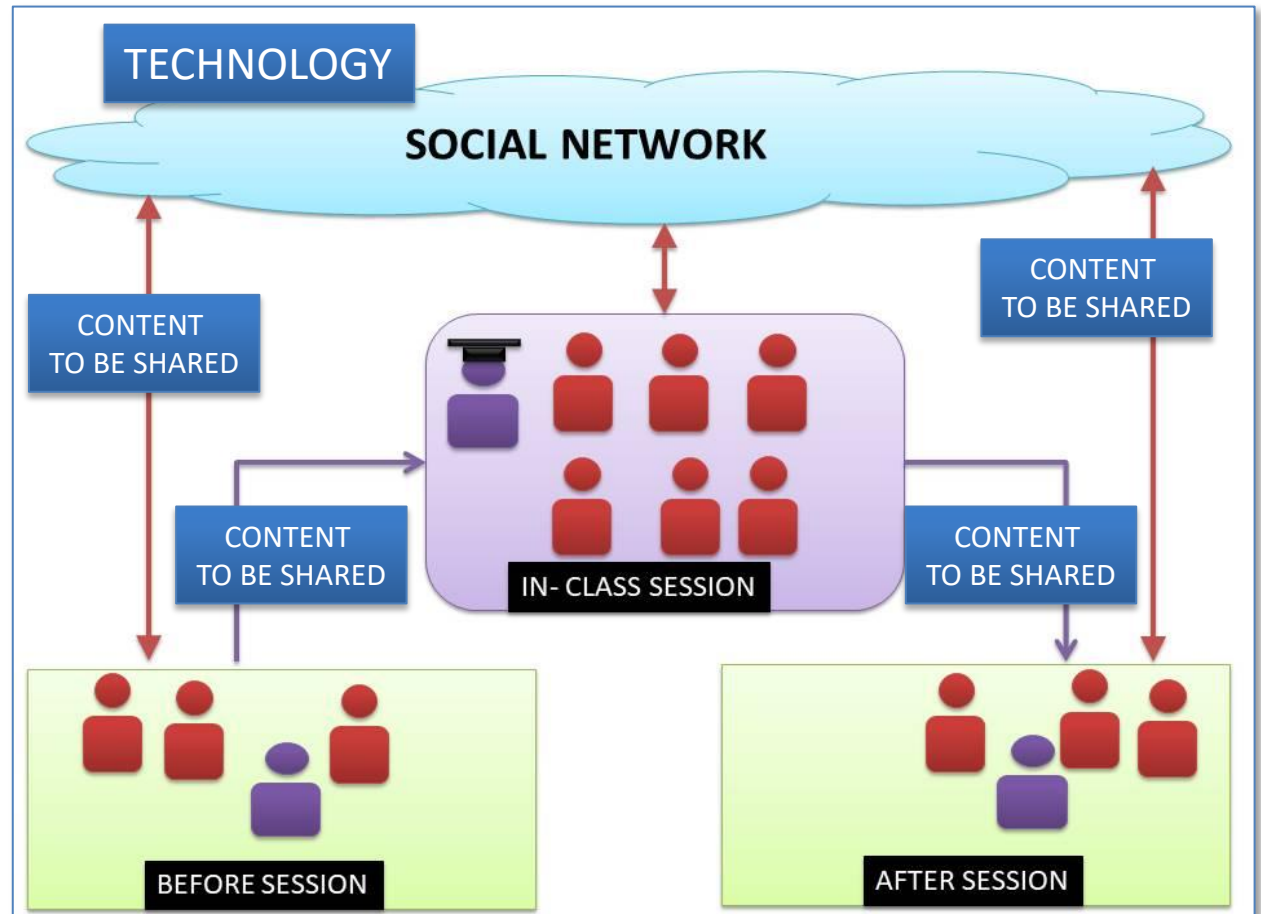
Active Cooperative Collective Intelligence (ACCI)





ACTIVE METHODOLOGY

STRATEGY





PROCOMÚN L2GIE2

MODERAR

Buscar en la comunidad

Sobre la comunidad

Filtrar

Todas las publicaciones

- Sesión 1
- Sesión 2
- Sesión 3**
- Sesión 4
- Sesión 5
- Sesión 6
- Sesión 7
- Sesión 8
- Sesión 9

a

#GIE2_Duda #GIE2_Alumno

Estoy intentando entregar el ejercicio propuesto por el moodle pero no funciona. ¿Alguien lo ha conseguido?

+1 16

1

tambien lo he intentado pero me pone que se esta configurando y no me deja

27 sem.

c

Apuntes de la sesión 3 **#GIE2_Alumno**

28 sem.

28/2/17
2 fotos - Ver álbum

+1

17/5/17
3 fotos - Ver álbum

victor

#GIE2_Duda
¿Se puede es

+1 1

Ignaci

Sofia

Apuntes de la

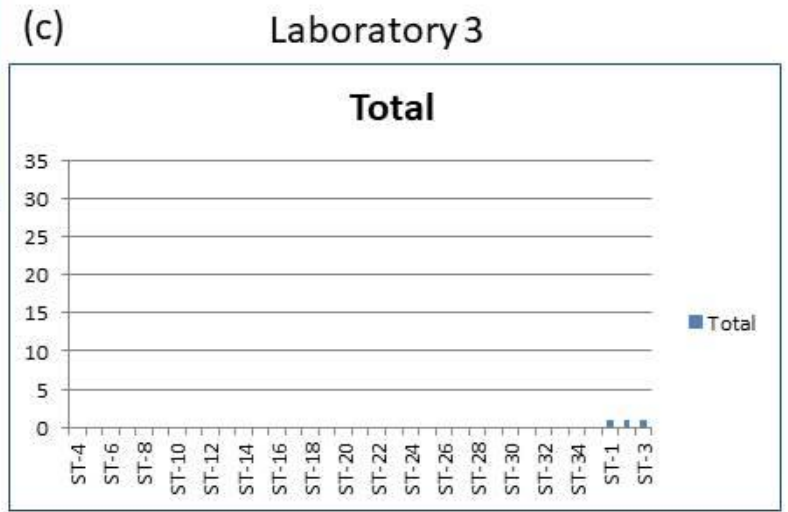
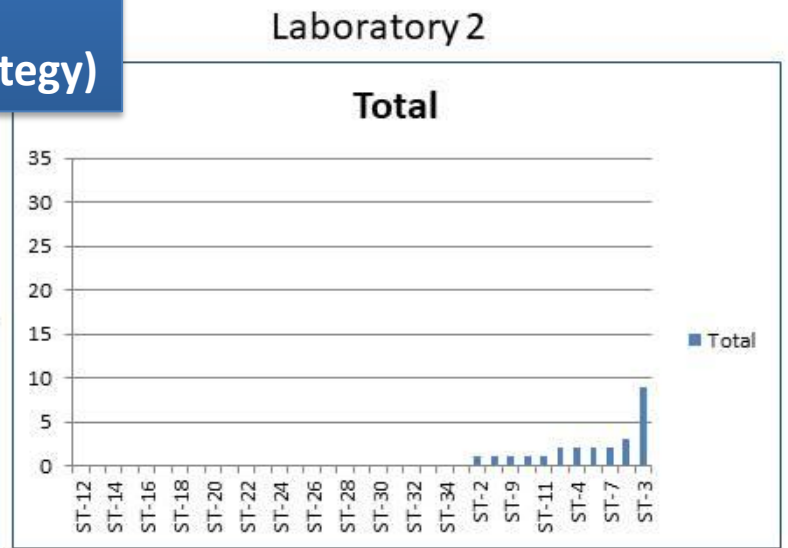
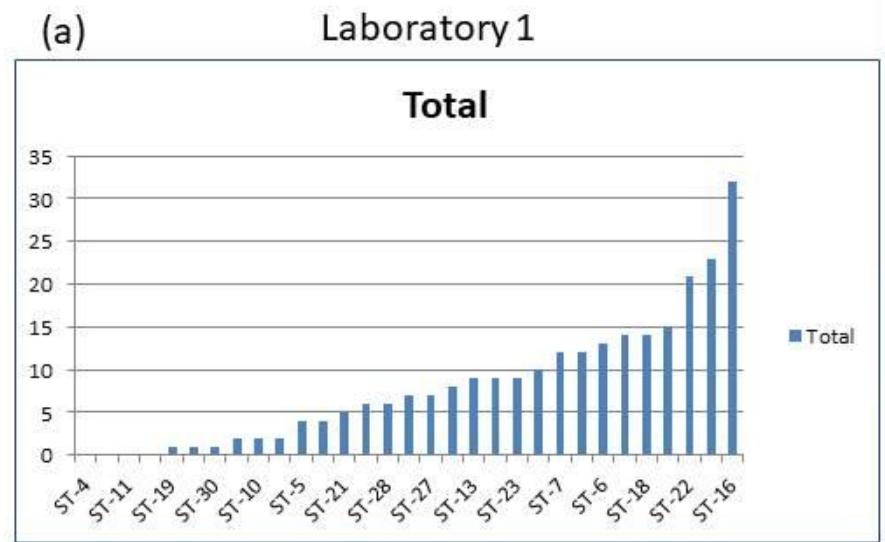
Listado de etiquetas

- Acción -----
- #GIE2_Temario**
- #GIE2_Petición**
- #GIE2_Duda**
- #GIE2_Respuesta**
- #GIE2_Aporte**
- Temática -----
- #GIE2_Matlab**
- #GIE2_Algoritmia**
- Fuente -----
- #GIE2_Profesor**
- #GIE2_Alumno**

b

NUMBER OF CONTRIBUTIONS PER GROUP / LABORATORY

- SAME TECHNOLOGY
- SAME METHODOLOGY
- SAME CONTENT
- **DIFFERENT STRATEGY (Laboratory 1 with ACCI strategy)**



NUMBER OF CONTRIBUTIONS PER GROUP / LABORATORY

- SAME TECHNOLOGY
- SAME METHODOLOGY
- SAME CONTENT
- **DIFFERENT STRATEGY** (CREATE A HABIT DURING THE IN-CLASS SESSIONS)

Group	Laboratory 1	Laboratory 2	Laboratory 3
Notes	16	6	0
Doubts	28	4	0
Responses	41	9	0
Examples	16	6	3
Total contributions	101	15	3
Contributions per person	3.25	0.71	0.08
“Likes”	170	0	0

LABORATORY 1

Q1. I have read some content corresponding to the different sessions in class.

	1	2	3	4
Notes contributed by other classmates	13	28	41	19
Doubts and Responses	6	31	31	31
Professor's syllabus	0	3	47	50
Programs solved by classmates	9	13	41	38

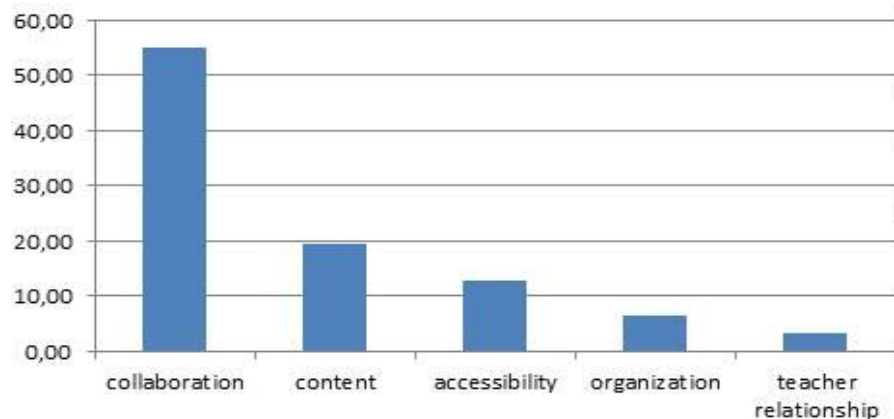
Q2. Indicate the degree of usefulness of the following contents.

	1	2	3	4
Notes contributed by other classmates	16	50	28	6
Doubts and Responses	0	19	56	25
Professor's syllabus	0	13	41	47
Programs solved by classmates	0	19	38	44

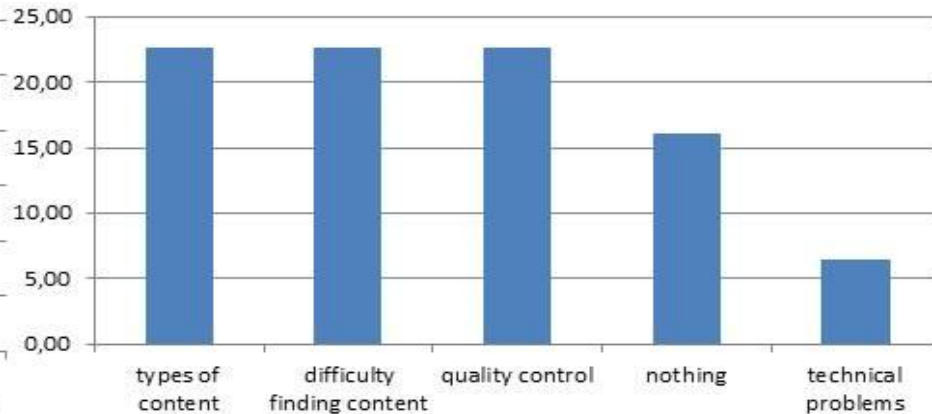
Q3. I would prefer that the contents of the social network uploaded individually by a classmate would be reviewed previously by a group of people.

	1	2	3	4
Notes	6	31	34	28
Doubts and responses	16	25	38	22
Programs solved (its proper functioning verified by the professor)	9	13	31	47

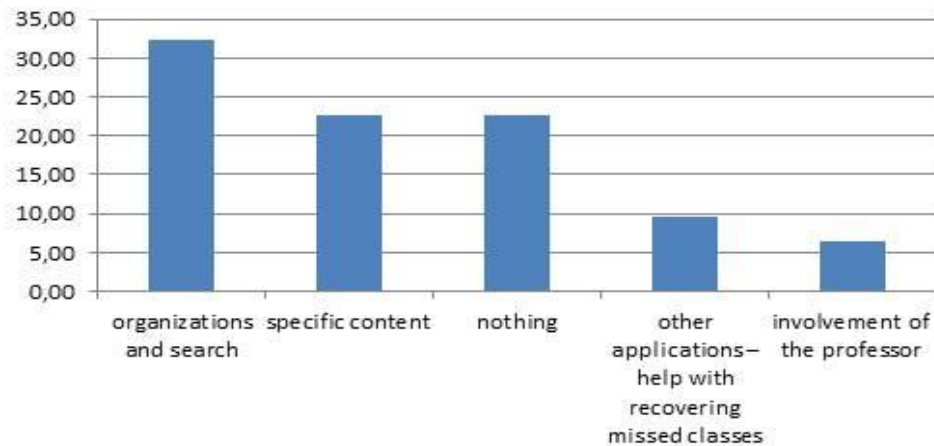
Q4. What I liked the most



Q5. What I liked the least



Q6. Improvements



CONCLUSIONS

IT IS NECESSARY TO CREATE A HABIT DURING THE IN-CLASS SESSIONS (AT LEAST DURING THE FIRST SESSIONS) FOR STUDENTS TO INVOLVE THEMSELVES WITH THE SOCIAL NETWORK AND TO CONTRIBUTE WITH BASIC CONTENTS TO CREATE COLLECTIVE INTELLIGENCE.

KNOWLEDGE CONTRIBUTED BY STUDENTS

- CLASS NOTES
- DOUBTS
- ANSWERS TO DOUBTS
- SOLVED EXAMPLES

THE GROUP LAB 1) SHOWS A MORE INTENSIVE USE OF KNOWLEDGE IN THE SOCIAL NETWORK.

SOME FEW RESOURCES IN A SOCIAL NETWORK ARE DIFFICULT TO FIND (DUE TO THEIR SCARCITY). WITH A BIG NUMBER OF RESOURCES, THE ORGANIZATION OF KNOWLEDGE IS CLOSELY LINKED TO THE EASE OF SEARCHING, IDENTIFYING AND USING IT.



HCI INTERNATIONAL 2018

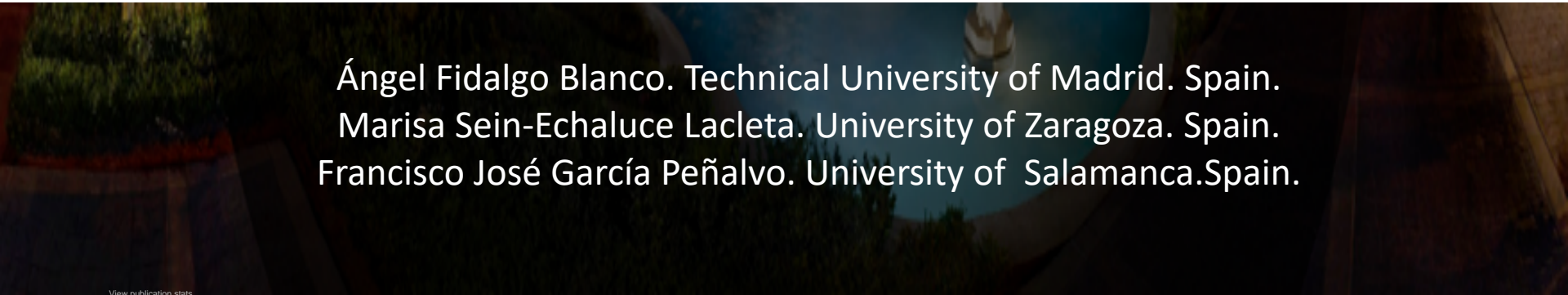
20TH INTERNATIONAL CONFERENCE

ON HUMAN-COMPUTER INTERACTION

CAESARS PALACE, LAS VEGAS, NEVADA

15-20 JULY 2018

THANKS FOR YOUR ATTENTION



Ángel Fidalgo Blanco. Technical University of Madrid. Spain.
Marisa Sein-Echaluce Lacleta. University of Zaragoza. Spain.
Francisco José García Peñalvo. University of Salamanca. Spain.